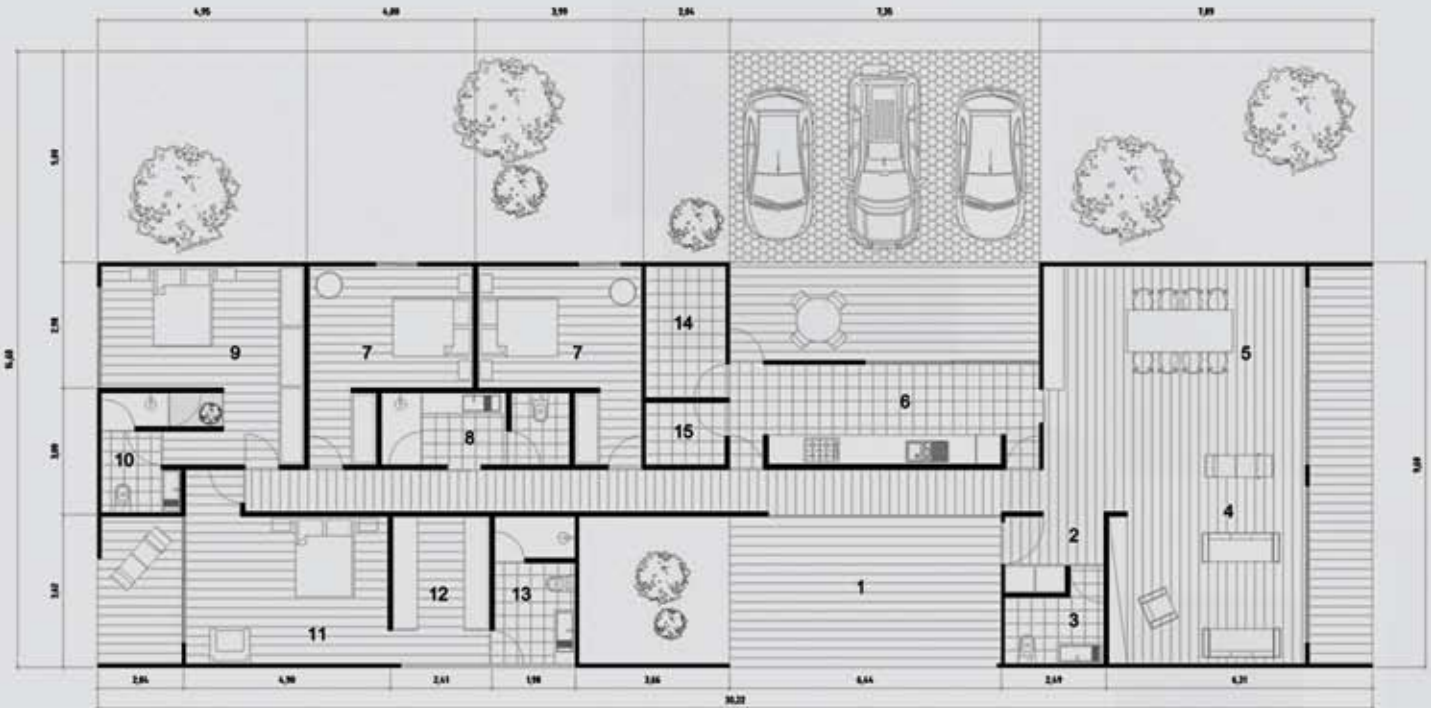




COMPOSITION

HOUSING MOOD PLUS T4

- | | |
|-------------------------------------|--------------------------------------|
| 1. PATIO . 35m ² | 8. WC . 7,5m ² |
| 2. HALL . 2,5m ² | 9. SUITE . 16m ² |
| 3. SERVICE WC . 4,5m ² | 10. SUITE WC . 6m ² |
| 4. LIVING ROOM . 27,5m ² | 11. MAIN SUITE . 18m ² |
| 5. DINING ROOM . 16,5m ² | 12. MAIN SUITE WC . 15m ² |
| 6. KITCHEN . 13,5m ² | 13. LAUNDRY . 6m ² |
| 7. BEDROOM . 13m ² | 14. STORAGE ROOM . 2,5m ² |



EQUIPMENT:

SOCIAL WC:

- SANITARY APPLIANCES (TOILET, SINK, WC FURNITURE, BATHTUB WITH GLASS COVER)

- BLENDING FAUCETS

PRIVATE WC:

- SANITARY APPLIANCES (TOILET, SINK, WC FURNITURE, SHOWER CABIN WITH TURKISH BATH/SAUNA)

- BLENDING FAUCETS

KITCHEN:

- KITCHEN FURNITURE SIMILAR TO A COUNTER WITH A SUPERIOR MODULE
- STAINLESS STEEL SINK WITH BLENDING FAUCET
- BUILT-IN HOB, ELECTRIC OVEN, HOOD AND WATER HEATING SYSTEM

BEDROOMS:

- WOODEN CLOSETS WITH RUNNING DOORS
- STONE WALL TYPE

INFRASTRUCTURES:

ELECTRICAL SYSTEM:

- CIRCUITS OF ELECTRIC SOCKETS AND LIGHTING INCLUDING ELECTRIC BOARD, ELECTRIC SOCKETS AND SWITCHES
- INDIRECT LIGHTING

PLUMBING SYSTEM:

- PLUMBING FOR HOT AND COLD WATERS
- PLUMBING FOR DOMESTIC WASTEWATER

ACCLIMATIZATION:

- INSTALLATION OF THE AC WITH SPLIT MACHINES (BEDROOMS AND LIVING ROOM)

FINISHING

WALLS

- INTERIORS COVERED WITH PLASTERBOARD PAINTED IN WHITE
- WC WALLS COVERED IN TILE
- EXTERIORS IN SANDED PAINT
- PORCH WITH DECKING FLOOR

CEILING

- CEILING IN PAINTED PLASTERBOARD WITH INDIRECT LIGHTING

FLOOR

- LAMINATE WOOD FLOOR
- EXTERIOR DECKING PAVEMENT