

## DESCRIPTION

Taking into account the specifics of the African market, where we are also represented, we have developed a social housing line, with the main goal of having a low cost of construction allied with a quick execution of the work.

Type **Mood2A**, projected also for these models and aiming at a bigger durability and resistance of the main block, the structure is composed by insulated panels, with 50mm of thermal and acoustic isolation, forming exterior and interior walls and sub-ceiling.



The panels, provided with their own socket and applied inside the galvanized profiles of type U, guarantee the rigidity to the ensemble in order to become a self-standing structure, which composes the main block. This is alligned on a concrete base, in which the connections to the existing infrastructures (water, electricity and sanitation) will be made.

The cover, in two waters with free pendants, is executed in a metallic plate imitating a Portuguese roofing tile in red.

## FINISHING:

### WALLS

- INTERIORS IN WHITE VISIBLE PANELS WITH FINISHING LACQUERED PLATE IN THE CORNERS AND CEILING
- EXTERIORS PAINTED IN SAND PAINT

### CEILING

- CEILING IN WHITE VISIBLE PANEL

### FLOOR

- FLOOR IN SMOOTH CONCRETE (THE BASE WILL BE MADE PAVEMENT)
- BASE BOARD IN WHITE PVC

## INFRASTRUCTURES:

### ELECTRICAL SYSTEM:

- CIRCUITS OF ELECTRIC SOCKETS AND LIGHTING INCLUDING ELECTRIC BOARD, ELECTRIC SOCKETS AND SWITCHES

### PLUMBING SYSTEM:

- PLUMBING FOR COLD WATERS
- PLUMBING FOR DOMESTIC WASTEWATER

## EQUIPMENT:

### WC:

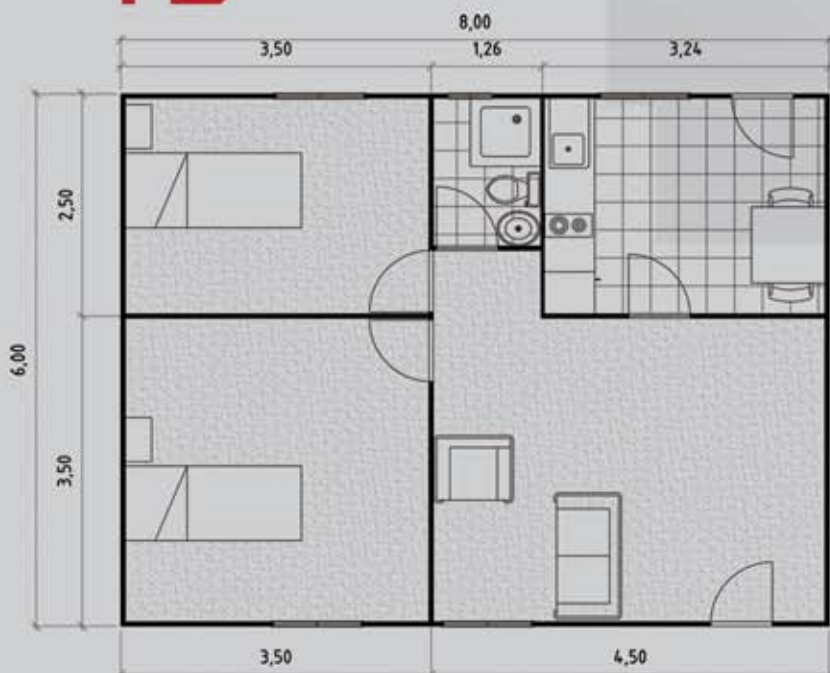
- SANITARY APPLIANCES (TOILET, SINK, SHOWER BASE WITHOUT A COVER)
- BLENDING FAUCETS

### KITCHEN:

- KITCHEN COUNTER WITH A 2M TOP
- SINK IN STAINLESS STEEL WITH BLENDING FAUCET

# LOW COST HOUSING

## T2

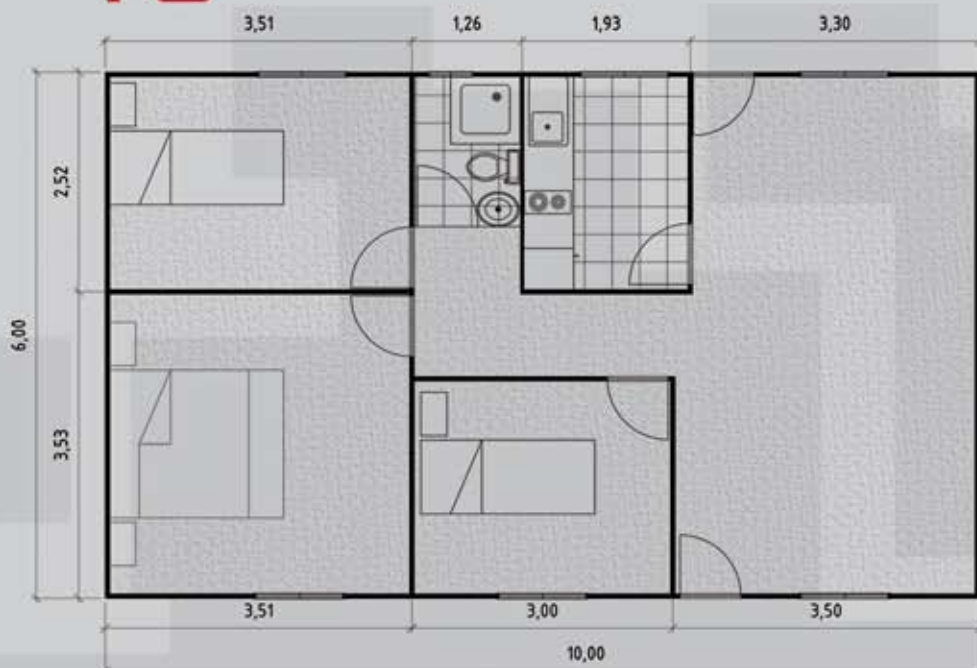


### TECHNICAL INFO

#### COMPOSITION

BEDROOM I . 8,45m<sup>2</sup>  
BEDROOM II . 12m<sup>2</sup>  
WC . 2m<sup>2</sup>  
KITCHEN . 11m<sup>2</sup>  
LIVING ROOM . 15,5m<sup>2</sup>  
GROSS AREA . 48m<sup>2</sup>

## T3



### TECHNICAL INFO

#### COMPOSITION

BEDROOM I . 7m<sup>2</sup>  
BEDROOM II . 8,5m<sup>2</sup>  
BEDROOM III . 12m<sup>2</sup>  
WC . 2m<sup>2</sup>  
KITCHEN . 4,5m<sup>2</sup>  
LIVING ROOM . 18m<sup>2</sup>

GROSS AREA . 60m<sup>2</sup>