

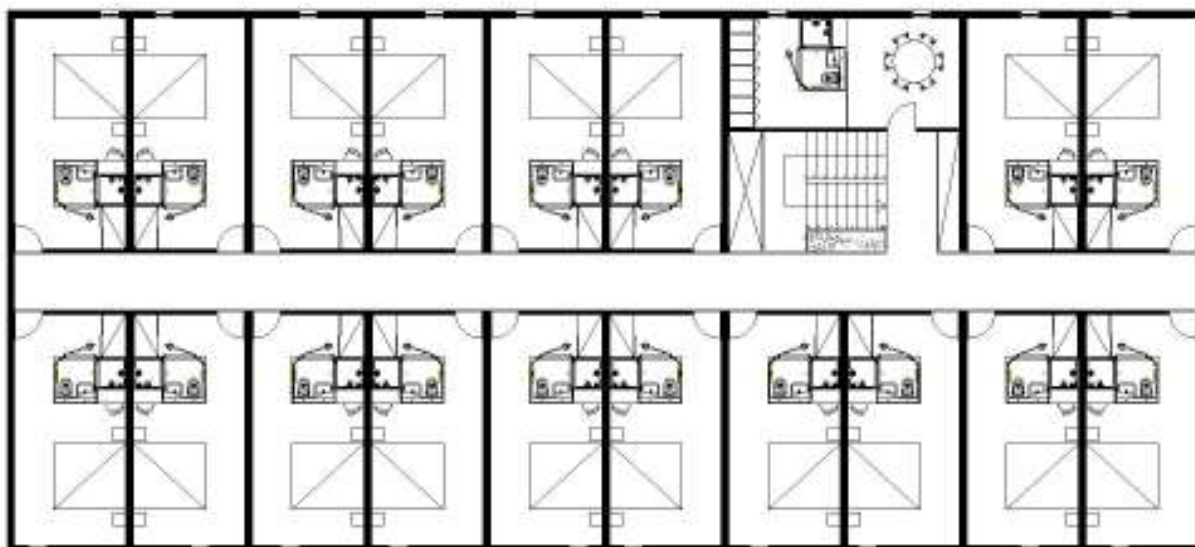
MOOD MODULAR HOTEL

Floor Plan

Ground Floor (Reception & Services)



1st, 2nd & 3rd Floors (Rooms)



Modular Hotel - Base building

Deployment Area - 525 m2
Total Area - 1.575 m2

Designed to provide lodging alternative response capabilities depending on their location, only possible due to its modularity. The combination of several similar buildings allows optimization of unit in number of rooms.

- Building on metal profiles in the formation of super-structure, cooperating slabs cover, based on concrete foundation, coated on the outside with panels of Sandwich type with 50mm insulation and painted with high density plastic paints.

- Level 0 with the hotel's reception, bar, catering with its own kitchen, laundry and toilet facilities for public and internal.

- Level 1,2 and 3 with a total of 45 rooms.



Equipment

Rooms (45uni/building):

- 19m2 Rooms with ensuite, carpeted floor, equipped with A/C, TV and private toilet with sanitary ware and shower cubicle.

Kitchen / Restaurant & Bar:

- Kitchen and dining room fully equipped with furniture and hotel equipment.

Laundry / Service:

- Laundry and wardrobe equipped with respective industrial machines.

Infrastructures:

- This includes the hot and cold water circuits, sewers, lighting, outlets, circuit TV, telephone, computer network and respective control panels.

- Installation of A/C with cassette type machine with grids in the rooms and ceilings cassette in the catering and reception areas.

NOTE: None of electrical installations, water, sewage or other installed has included their meters or their connection to foreign networks or public / private infrastructure facilities. These must be provisioned by the customer.

Finishing

Walls:

- Interior lined with "plasterboard" and painted.
- Walls of WC's and kitchen covered with tiles.
- Exterior painted with sand paint.

Ceiling:

- Ceiling in painted "plasterboard" with recessed lighting.

Flooring:

- Floor carpeting in the bedrooms.
- Laminate wood floor in the restaurant area.
- Ceramic floor in service areas and circulation.